

## January/February 1940

### Reinforcements

Japan	2xWarlords 2xCL	Peking (3-2), Shanghai (4-3) "Aoba", "Kinugasa"	Tokyo
Germany	MIL AA 2xRaider	Munich (6-2) 100mm (12-1) "Pinguin", "Michel"	Hanover Stettin
Italy	Nil		
C/Wealth	INF AA ASW* 2xBB* SUB*	1SA (5-3) Oerlikon (6-1) "Anson", "Duke of York"	Pretoria London Halifax Glasgow Plymouth
France	FTR3	Potez 631	Paris
China	GARR CAV INF	13(Res) (3-1) 1 (Nationalist) (3-4) 14 (4-2)	Cheng-Tu ChungKing Kunming
USA	INF BB FTR2	XXXXV (5-3) "Maryland" F2A "Buffalo"	Washington San Francisco
USSR	SUB*		Vladivostok

\*To Construction Pool

More Chinese guerrilla activity sees roadblocks erected throughout the province SE of Peking.

**Lending Resources**      Nil

**Initiative**                      Axis dr = 2(+1)    Allies dr = 4      Axis do not challenge  
Allies decide to give initiative to Axis

Weather rolls for the turn are 4, 9, 12: starts fairly well but ends with one of the worst winters ever

**Impulse 1 (Axis)**              von Bock arrives in the West

Weather dr = 4                      Sn, St, F, F, R, F (2)\*

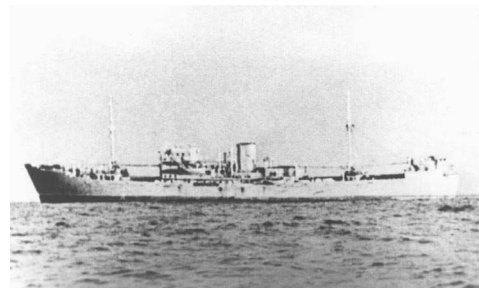
The Japanese send the Peking warlord and his motley army into the northern mountains to hunt for partisans.

Japanese cargo ships sail for the South China Sea to start carrying the looted resources of the newly captured provinces back to the hungry factories of Japan.



General von Bock, the hero of Warsaw, finally arrives to take up command of the Northern Army Group, based on the Dutch border.

The converted freighter “Kandelfels”, now known as the “Pinguin”, with her sister commerce raider the “Michel” (formerly the “Bielsko”), quietly slip out of Stettin and evade the British picket cruisers in the North Sea. Using the stormy weather to their advantage, the pair of Hilfskreuzer berth in Lisbon. The British are alarmed at this first threat to their vital convoy lifeline.



*The “Michel” approaches the coast of Portugal*

**Impulse 3 (Allies)**      Call to the Colonies

French troopships enter Beirut harbour and start loading Syrian territorial forces. At the same time, the “Queens” carry out a similar exercise in Tanganyika.

Chinese units move forward in the south, while in the north the partisans move deeper into the mountains.

**Impulse 5 (Axis)**      Kuomintang 6th Army Stands Firm

Weather dr = 8(+1)      B, Sn, Sn, F, St, R (3)\*\*

South of Peking the Japanese 2<sup>nd</sup> Motorised Corps sweeps through a guerrilla infested province, clearing roadblocks and mending sabotaged bridges – open communications are restored.



Kwei-Yang finally comes under direct attack. Although the “Vals” as usual demoralise the defenders, the 6<sup>th</sup> Army holds firm. The defenders do suffer horrendous casualties, with the Kunming warlord being killed with his men, and more than half the 6<sup>th</sup> Army on the casualty list (2BPs and flipped). The Japanese take comfort that the attack was more a strong probe than a full assault, but still smart from the heavy losses taken by the combat engineers who led the attack (2BPs).

*The Kunming warlord shortly before the attack on Kwei-Yang*

Germany appears to have manoeuvred its forces into the most effective positions – no troop movements are detected.

**Impulse 8 (Allies)**      The Royal Navy Protects the Sea

Kiang Kai-shek, jubilant at the first repulse of a Japanese attack, (albeit a Pyrrhic victory), reinforces Kwei-Yang.

The Admiralty responds to the threat of commerce raiders by issuing its first general alert. Across the globe, dozens of cruisers set sail for the sea-lanes, on the alert for attacks on the vital convoys. La Royale assists by sending the carrier “Bearn” to patrol the Bay of Biscay.



*The “Bearn” heads out into the Bay of Biscay, searching for the commerce raiders “Pinguin” and “Michel”*

*Turn ends on a 2, 10 rolled*

**Impulse 11 (Axis)**      Kwei-Yang holds again

Weather dr = 10(+2)      B, B, B, R, St, St (4)\*\*\*

Yamamoto, enraged at the stubborn Chinese resistance, orders a fresh assault on Kwei-Yang, even though his front-line commanders warn that driving rain will hamper operations. The attack is a dismal failure. Although the crippled Chinese 6<sup>th</sup> Army collapses, the new reinforcements stand firm, taking only slight losses (*1BP to 1 INF Div*). In contrast the Imperial Guard is decimated and will require substantial inputs of men and materiel (*4BPs*).

*Turn ends on 5, 10 rolled*

**Impulse 14 (Allies)**      Frozen solid

The Allies are restricted by the appalling weather and few units can move more than a few miles.

*Turn ends on 8, 7 rolled*              *No change to initiative, remains +1 Axis*

**Partisans**

dr = 7(Malaya)              Garrison = 1      Partisan No. = 2              Uprising put down easily (*dr=5*)

**US Entry**                      Chit to Ge/It pool              No actions taken

**Return to Base**              Most Commonwealth ships elect to remain at sea, conscious that the German raiders could leave the neutral port of Lisbon at any time, and that the raiders have the ability to strike halfway around the world.

**Production**

The world's armament producers conduct their annual review of production lines, and hard decisions are made to discontinue obsolete and unsuccessful models. At the same time, the various armed forces departments decide whether or not units should be disbanded. Only in the USA are out-dated models and inefficient practices continued.

Scrapped

Commonwealth	LND2	Wellesley (1-*-1-2)/8
	LND3	Anson (0-*-1-1)/5
	ASW	1936 (Canada)
	2xCVP0	2xNimrod (1-1-*-*)/3
	2xCVP1	2xBaffin (0-2-*-*)/2, (1-2-*-*)/2



*Baffins leave the aircraft carrier "Furious" after being officially withdrawn from service*

France	AA	37mm (2-3)
	2xCVP1	2xSBC-3 (1-2-1-*)/2

China                      SUB                      1937 (2-8)4/2

USSR                      5 MOT (4-5) withdrawn from service and replaced with 5 Heavy MOT (6-5)

USA Not allowed as yet (revised US Entry option)

Germany INF XXXV (4-4)  
MOT XXXXVI (5-4)  
2xFTR2 Bf 109B, Bf 109C (3-\*-\*)/3  
3xLND2 2xHs123 (3-1-2-\*)/4, (3-\*-2-\*)/4  
Ju87B (1-1-5-1)/3  
3XLND3 Do17E (1-\*-2-1)/4  
Ju86D (0-\*-2-1)/2E  
He111B (1-\*-2-3)/4E  
2xCVP1 2xMe109E (2-1-\*-\*)/2

Japan ART 105mm (3-2)  
2xFTR2 2xA5M "Claude" (3-\*-\*)/5  
2xLND3 Ki-21 "Sally" (2-\*-1-3)/6E  
Ki-48 "Lily" (2-\*-2-1)/6E  
3CVP1 2xA5M4 (3-1-\*-\*)/5  
D3A1 (2-2-\*-\*)/4  
SUB 1922 (2-8)4/4



*Japanese 105mm Type 38 cannon in action near Kwei Yang: the 1905 design is now obsolete and the licence from Krupp has been cancelled*

Italy FTR2 CR32bis (3-\*-\*)/3  
LND2 BA65 (2-1-3-1)/2  
LND3 Ca133 (0-\*-1-2)/6  
2xAMPH 1933(4/2), 1935 (4/2)

	Base (Resource/Oil)	Imports	Less Oil	PPs	Multiple	BPs	Trade	Losses/ Enemy*	Total BPs
Germany	18/6	+1	-1	24	.75	18	-2		16
Italy	4/1			5	.75	4			4
Japan	13/4	+1	-1	17	1	17	-1		16
UK	11/8	+3	-1	21	.75	16			16
Canada	2			2	.75	2			2
Australia	1			1	.75	1			1
India	2			2	.75	2			2
France	8/1			9	.75	7			7
China	5			5	.5	3		+2/+1	6
USA	22/18		-1	39	.25	10	+1		11
USSR	15/8			23	.5	12	+2		14

\*Losses: in Home Country, receive ½ of all BPS lost defending, ¼ of all BPS lost attacking

\*Enemy: receive 1BP if an enemy unit in Home Country at Production phase

Germany (16BP)	On map	SE of Berlin	Synthetic Oil plant (1)	2BP	
		Kiel	SUB Shipyard (1)		
	In production	Essen	MOT V (1)	5BP	
		Cologne	LND3 Ju88A1 (1)		
		Dusseldorf	HQ(A) Guderian (1) FTR3 Bf 110C (1)		
	Start prod'n	Hanover	INF VI (1)	9BP	
			2xPilot (2)		
		Dusseldorf	FTR2 Bf109 F1(1)		
		Munich	LND3 Ju88 A4 (1)		
		Stettin	2xRaiders "Kormoran", "Orion" (1)		
SW of Berlin		Synthetic Oil (2)			
Berlin	HQ(A) Rommel (1)	9BP			
Prague	ARM Specialisation (1)				
Italy (4BP)	On map	Milan	Synthetic Oil plant (1)		
	In production	Milan	MAR Marine (1)		
	Start prod'n	La Spezia	CL "Tiberio"		Pilot (1)
			BB "Impero"(const pool) (1)		
Japan (16BP)	On map	Repair MAR Imperial Guard (4)	5BP		
		Fukuoka		CV Shipyard (1)	
	In production	Osaka	MTN 1 (1)	1BP	
		Tokyo	CA "Otago" (repair)		
	Start prod'n		CL "Agano" (1)	10BP	
		Fukuoka	2xSUB (one from const) (2)		
		Osaka	CV "Shokaku" (const) (1)		
		Fukuoka	INF 11 (2)		
		Hiroshima	INF 27 (2)		
		Osaka	MAR Div 1SNLF (2)		
C/wealth (16BP)	On map	Belfast	SCS Shipyard (1)	2BPs	
		NE Liverpool	Synthetic Oil (1)		
	In production	London	MOT XI (1)	5BPs	
		Manchester	FTR2 Hurricane (1)		
		Southampton	INF V (1)		
		Belfast	NAV3 Beaufort (1) Pilot (1)		
	Start prod'n	London	HQ(I) Alexander (3)	9BPs	
		Leeds	LND2 Battle (1)		
		Glasgow	FTR2 Hurricane (1)		
		Belfast	CV "Victorious" (const. pool) (1)		
Glasgow		2xCA "Mauritius", "Kenya" (const pool) (1) 2xPilot (2)			
Canada (2BPs)	Start prod'n	Ottawa	MOT 1CAN (1)		
		Halifax	ASW (from const pool) (1)		

India (2BPs)	In prod'n	Bombay	INF	13IND (1)	
	Start prod'n	Bombay	GARR	7IND (1)	
Australia	In prod'n	Perth	TRS		
France (7BPs)	In production	Paris	HQ(I)	Pretelat (1)	
			MTN	Morocco (1)	
			MIL	Bordeaux, Marseilles (2)	
			Pilot	(1)	5BPs
	Start prod'n		MIL	Senegal (2)	2BPs
China (6BPs)	On map	Repair 1	INF Div	(1)	1BP
	In production	ChungKing	INF	1 (1)	
		Si-An	CAV	1 (1)	
			MIL	Lan Chow (1)	3BPs
	Start Prod'n	ChungKing	INF	6 (2)	2BPs
USA (11BPs)	In production	San Francisco	2xBB	"Massachussetts", "South Dakota" (1)	
			Pilot	(1)	2BPs
	Start prod'n	Los Angeles	CV	"Langley" (const pool) (1)	
			CVP1	F4F-4 (1)	
			SUB	(1)	
		New York	NAV3	PBM-1 "Mariner" (1)	
		Boston	TRS Shipyard	(1)	
		San Francisco	BB	"New Jersey" (1)	
		Washington	CV	"Saratoga"(repair pool)(1)	
			CL	"Atlanta"(1)	
			Pilot	(1)	9BPs
USSR (14BPs)	In production	Vitebsk	INF	5 (1)	
		Odessa	INF	12 (1)	
		Kiev	MOT(h)	6 (1)	
			MECH	2(1)	
			Pilot	(1)	5BPs
	Start prod'n	Moscow	HQ(I)	Yeremenko (3)	
		Kiev	INF	29 (2)	
		Leningrad	INF	6 (1)	
		Odessa	FTR2	I-16 (SPB) (1)	
			Pilot	(1)	
<b>Conquest</b>	Nil				

### Losses: January/February 1940

China	Warlord	Kunming (4-2)		2BPs
	INF	4 (4-3)		3BPs
		1 INF Div took	1BP	6BPs
Japan	Imperial Guard	MAR took	4BPs	
	1 Eng Div took	2 BPs		6BPs